

Community Forum

February 10, 2022

5:00pm – 6:00pm



Today's Outcome

**CUSD educational partners
will have a deeper
understanding of the
metrics used to measure
student outcomes as defined
in the CUSD Local Control
Accountability Plan.**

The *Local Control Accountability Plan* (LCAP) is a tool for local educational agencies to set goals, plan actions, and leverage resources to meet those goals to improve student outcomes.

➤ Three Year static plan (2021-2022 to 2023-2024)

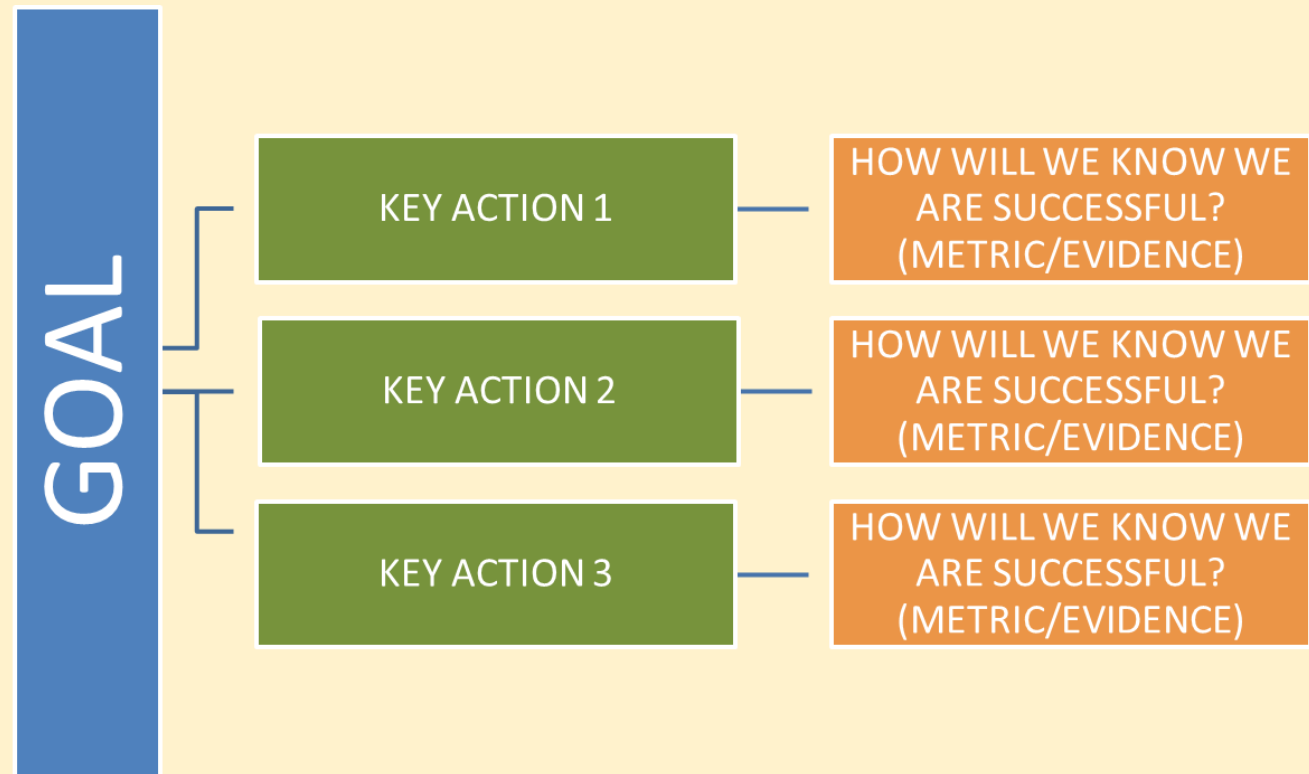
➤ GOALS

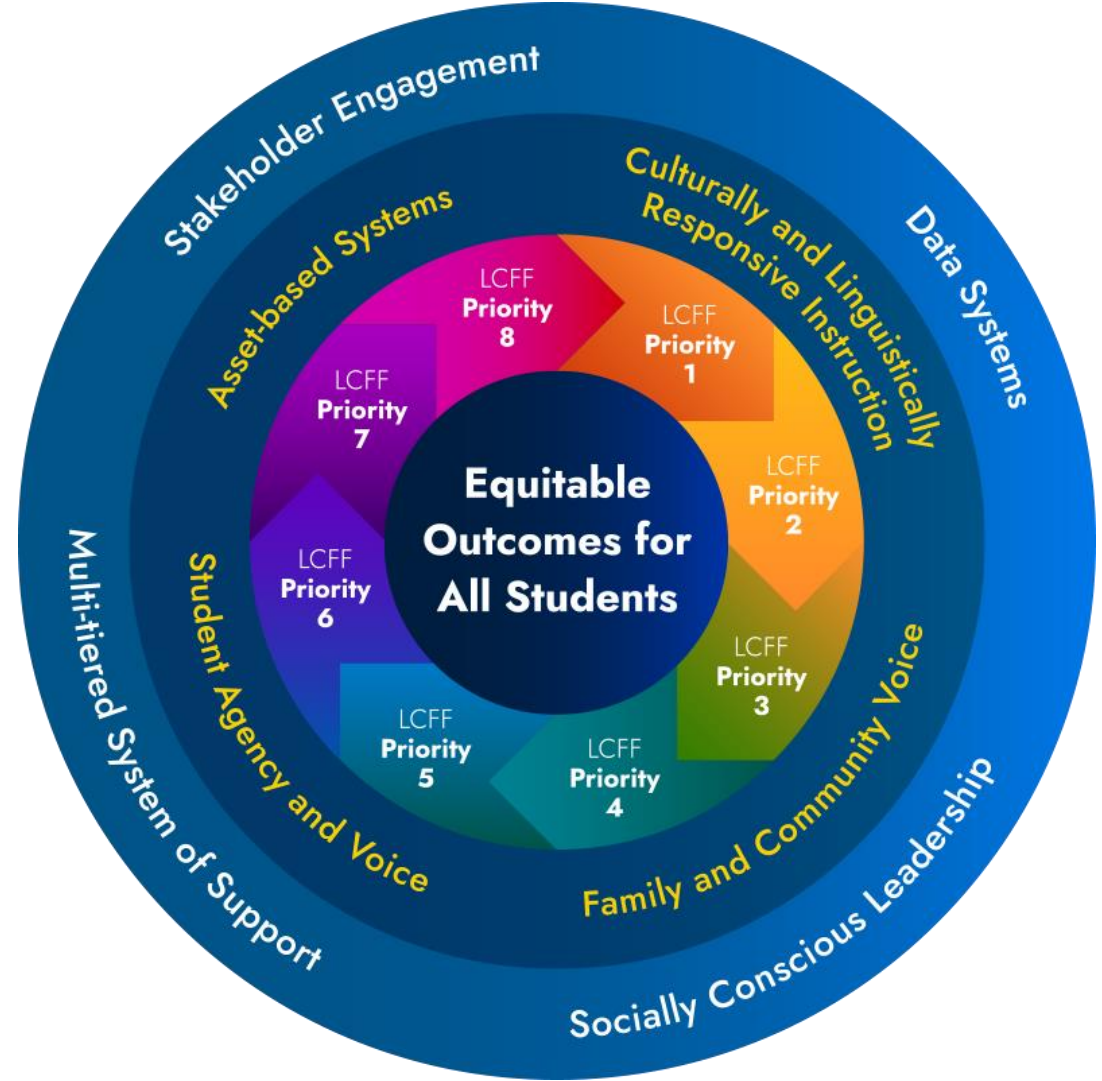
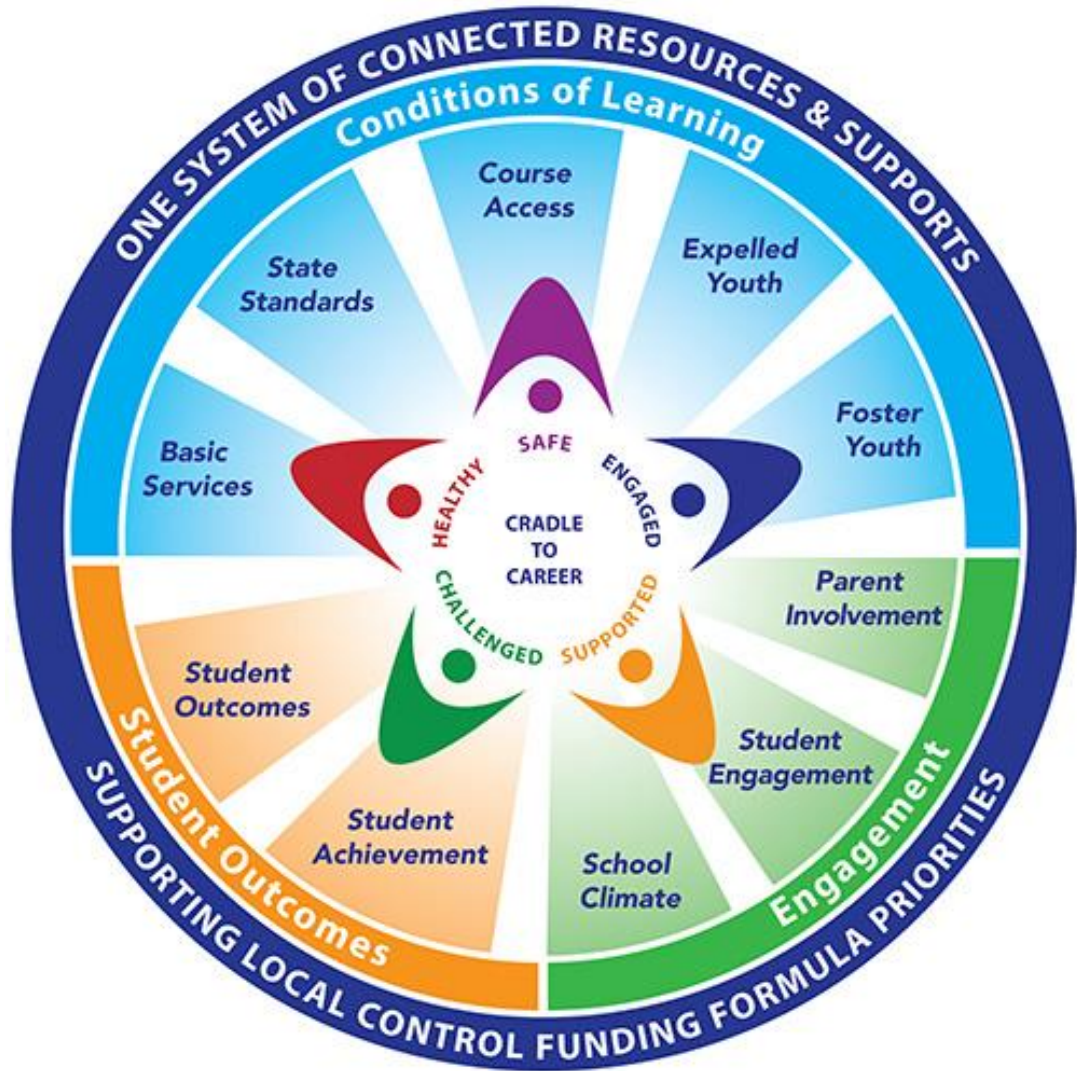
✓ KEY ACTIONS

✓ METRICS

Mandated metrics

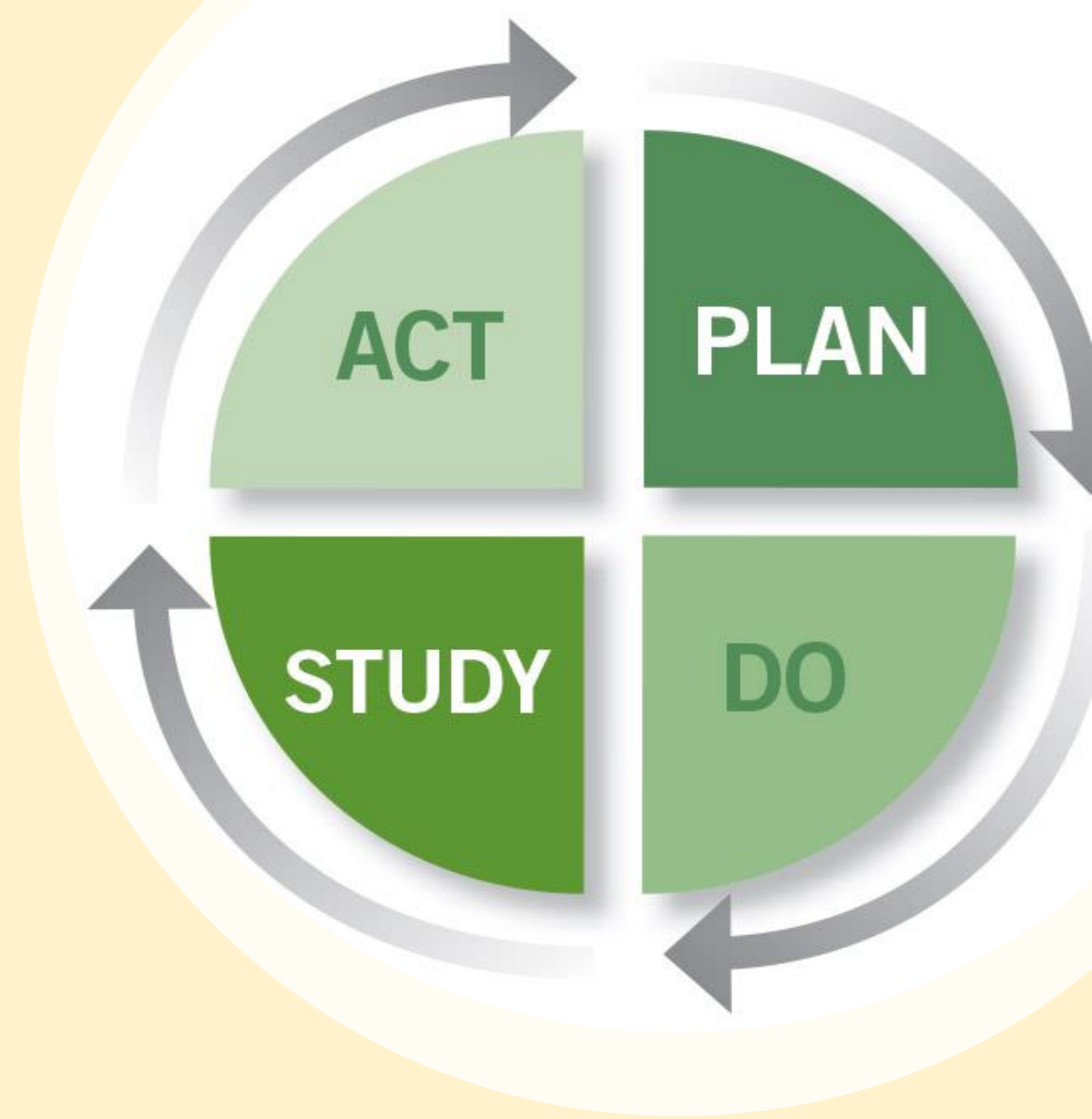
Local metrics

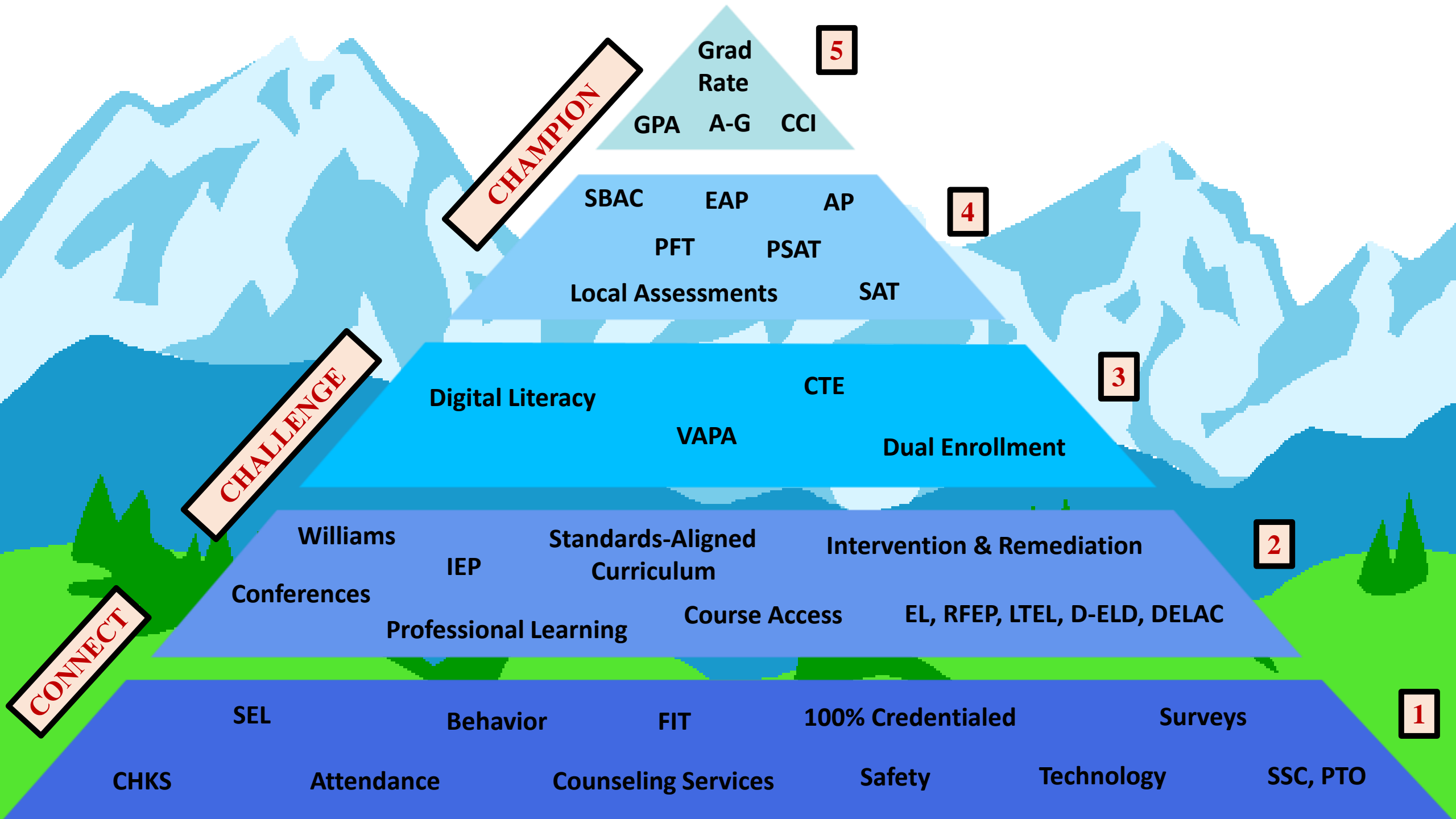




Data Systems!

- ✓ Qualitative and Quantitative
- ✓ Broad array of information on student skills and knowledge
- ✓ PDSA Cycle:
 - Professional Learning Communities
 - Assessment Literacy
 - Data Overviews
 - Data Digs
 - Action Planning
 - Progress Monitoring





Grad Rate

5

GPA A-G CCI

CHAMPION

SBAC EAP AP
PFT PSAT
Local Assessments SAT

4

CHALLENGE

Digital Literacy VAPA CTE
Dual Enrollment

3

CONNECT

Williams Standards-Aligned Curriculum Intervention & Remediation
Conferences IEP Professional Learning Course Access EL, RFEP, LTEL, D-ELD, DELAC

2

SEL Behavior FIT 100% Credentialed Surveys
CHKS Attendance Counseling Services Safety Technology SSC, PTO

1

Academic Interventions

Behavioral/Social-Emotional Interventions

Individualized, assessment-based interventions are provided for students at high risk and delivered with increased intensity and duration.

Specialized, individualized systems are provided for students exhibiting high-risk behavior. Highly intensive and individualized interventions based on assessments are delivered to individual students.

Supplemental small group interventions are provided to each student whose performance level and rate of progress lag behind that of peers. Students will receive targeted skill instruction that is more intensive.

Small group positive behavior support interventions are provided for at-risk behavior in addition to the general education systems in place at Tier 1. Some students will receive targeted or group interventions (e.g., social skills groups, self-management strategies, self-regulation strategies)

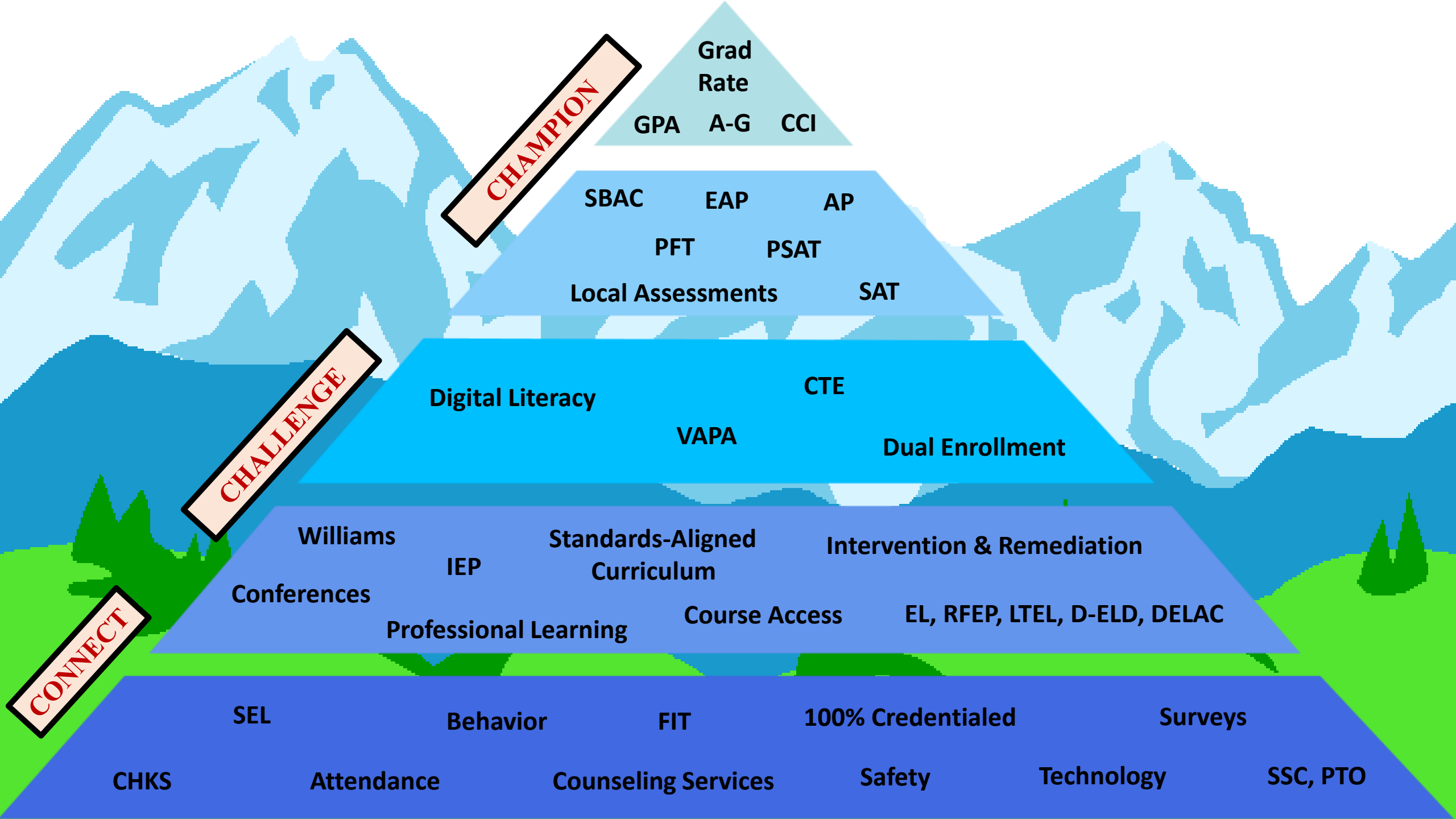
Core instructional interventions or enhanced instruction for all students in the general education classroom. Evidence-based pedagogy relative to content, process product, and learning environment.

School-wide and classroom discipline plans are in place for all students. Universal interventions are proactive and preventive and are provided for all students in all settings. SEL skill development and practice within a positive school climate offers universal supports for all students.

Tier 3
<5% of
all students

Tier 2
15% of all students

Tier 1
80% of all students



CHAMPION

Grad Rate
GPA A-G CCI

SBAC EAP AP
PFT PSAT
Local Assessments SAT

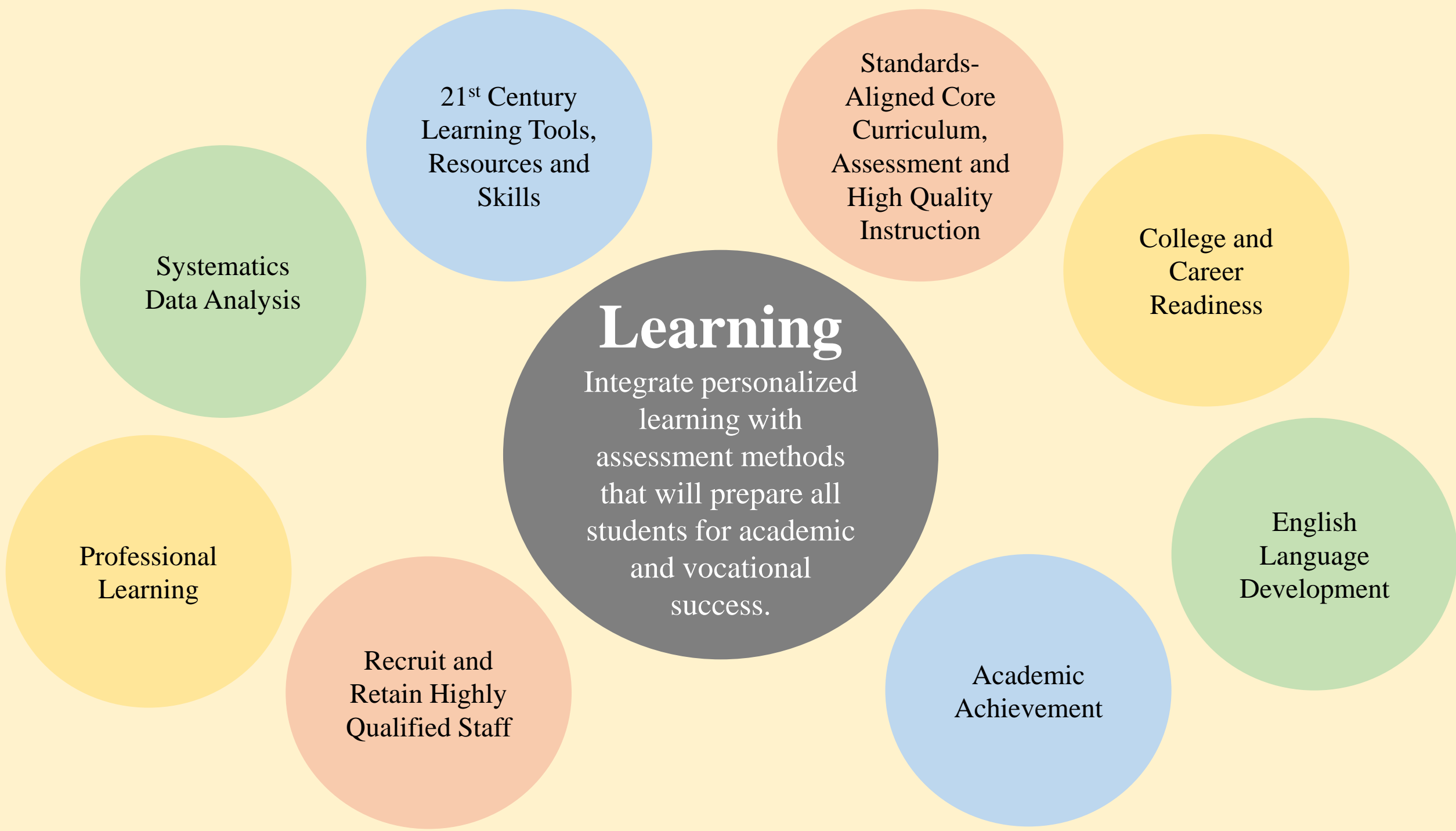
CHALLENGE

Digital Literacy VAPA CTE
Dual Enrollment

CONNECT

Williams Standards-Aligned Curriculum Intervention & Remediation
Conferences IEP Professional Learning Course Access EL, RFEP, LTEL, D-ELD, DELAC

SEL Behavior FIT 100% Credentialed Surveys
CHKS Attendance Counseling Services Safety Technology SSC, PTO



Learning

Integrate personalized learning with assessment methods that will prepare all students for academic and vocational success.

Systematics
Data Analysis

21st Century
Learning Tools,
Resources and
Skills

Standards-
Aligned Core
Curriculum,
Assessment and
High Quality
Instruction

College and
Career
Readiness

English
Language
Development

Academic
Achievement

Recruit and
Retain Highly
Qualified Staff

Professional
Learning

Communication

Communicate openly, freely, and accurately to engage and involve all stakeholders.

Stakeholder
Participation,
Communication
and
Engagement

Two-Way
Communication

CUSD Website



CUSD CAASPP English Language Arts

2018	2019	2021
76%	78%	77%

School Level CAASPP English Language Arts

VES 2018	VES 2019	VES 2021
70%	74%	76%

Grade Level CAASPP English Language Arts

Grade 3 2018	Grade 3 2019	Grade 3 2021
66%	73%	72%

Subgroups Claims
 Targets Local Assessments
 Triangulation

Tier 1 Support

Tier 2 Support

Tier 3 Support

Individual Student

Tier 1 & 2 Examples

- Small, flexible groups
- Graphic organizers
- Visuals, charts, models
- Chunk assignments
- Multisensory techniques
- Step-by-step instructions
- Questioning (DOK/Blooms)
- Supplementary materials
- Short segments of instruction
- Adjust instructional time
- Frequent monitoring and assessments for learning
- Clear success criteria
- Collaboration
- Strategic seating
- Build background knowledge

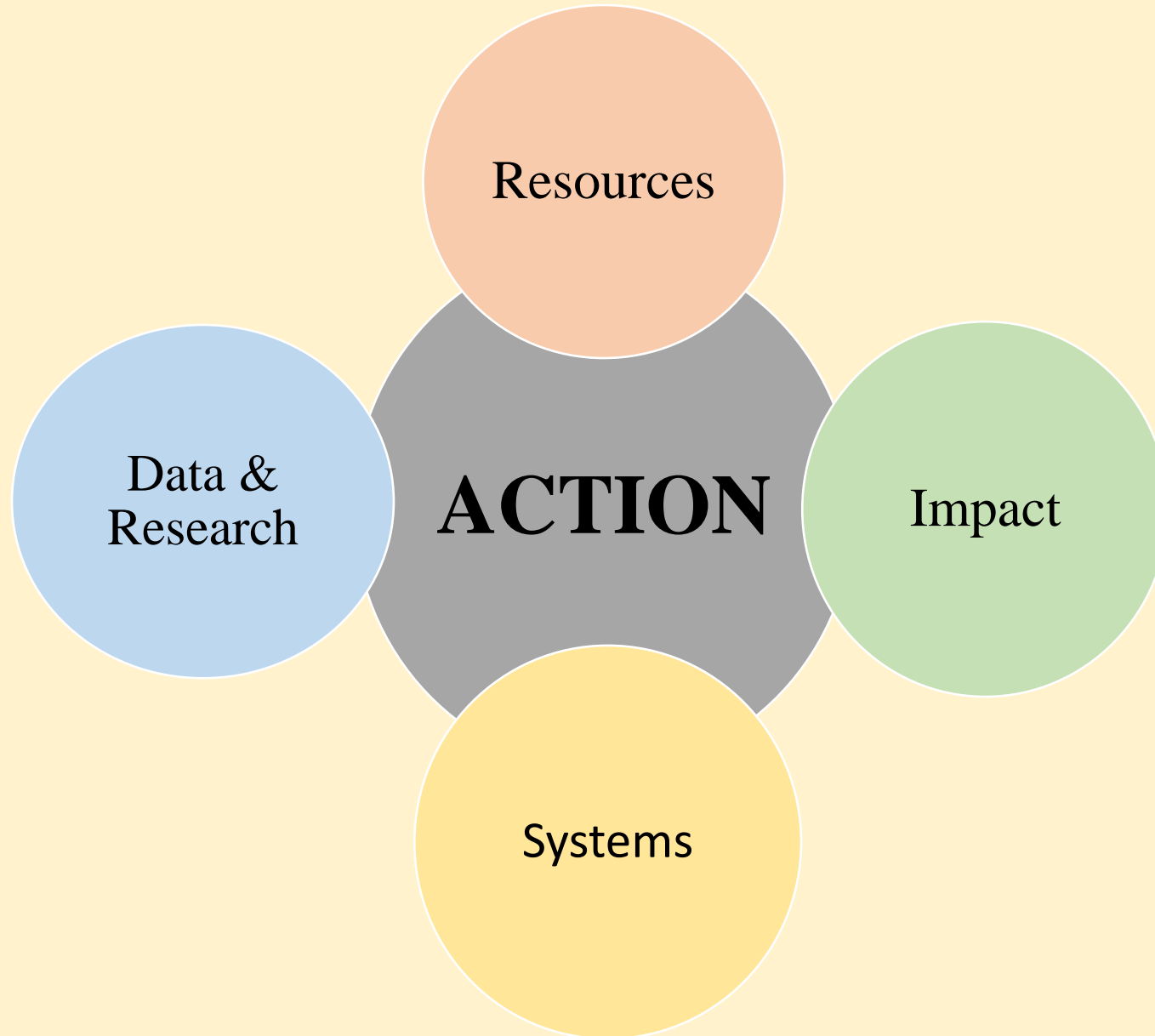
Tier 3 Examples

- Diagnostic assessments
- Daily intensive instruction
- Instructional specialists
- Movement breaks
- Supplementary materials
- Multisensory techniques
- Chunk assignments
- Provide examples
- Increase practice time
- Explicit explanations
- Build prior knowledge
- Alternate text
- Easy-to-follow visuals
- Graphic organizers
- Technological tools
- Thinking frameworks

Support Structures

- General Ed Classroom
- Small Group Support
- Support Courses
- Special Education

Responsive to Data



THANK YOU!