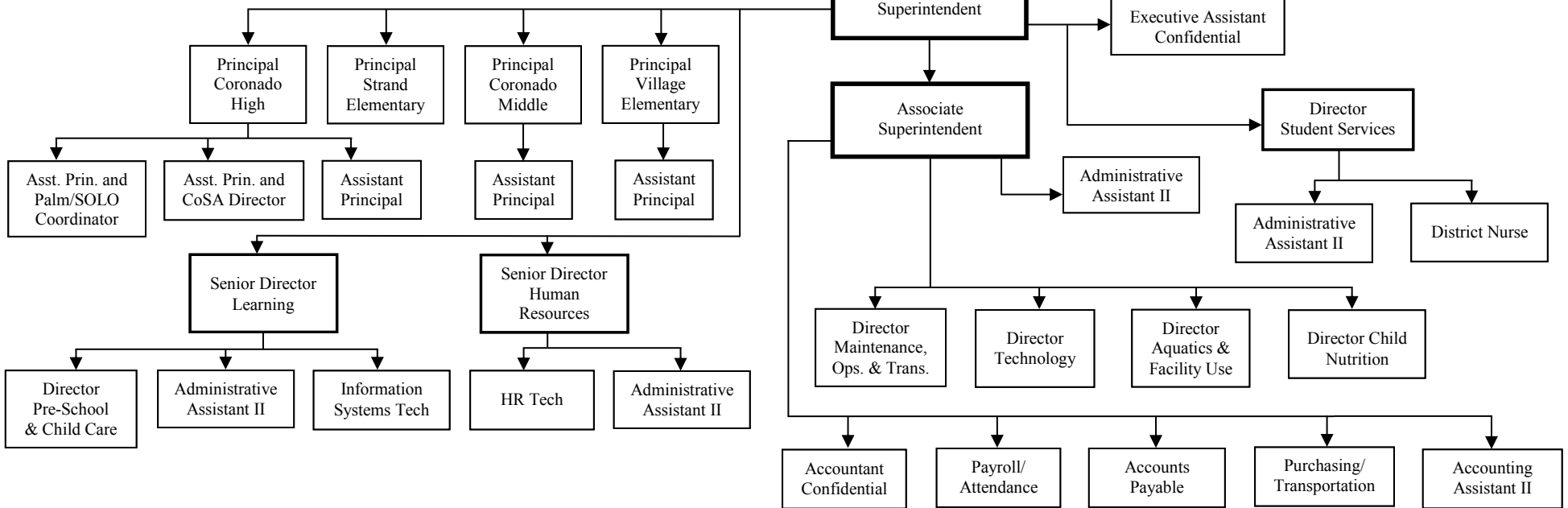


Coronado Unified School District Organizational Chart 2016 – 2017



Superintendent (CEO).....	TBD
Associate Superintendent (CBO).....	Dr. Keith Butler
Principal High School.....	Jennifer Moore
Principal Middle School.....	Karin Mellina
Principal Strand Elementary.....	TBD
Principal Village Elementary.....	Whitney DeSantis
Asst. Principal CHS and CoSA Director.....	Shane Schmeichel
Assistant Principal CHS.....	TBD
Asst. Principal CHS and Palm & SOLO Coordinator.....	Kevin Nicolls
Assistant Principal Middle School.....	TBD
Assistant Principal Elementary Schools.....	Tom Bevilacqua
Senior Director of Learning.....	Claudia Gallant
Senior Director of Human Resources.....	Rita Sierra Beyers
Director of Student Services.....	TBD
Director of Technology.....	Ramona Loiselle
Director of Adult Education/ROP.....	OPEN
Special Education Program Specialist.....	OPEN

Executive Assistant Confidential (CEO).....	Maria Johnson
Director of Maintenance, Operations, and Transportation.....	TBD
Director of Child Nutrition Services.....	Charity Johnson
Director of Pre-School & Child Care.....	Kathy Mathis
Director of Aquatic & Facility Use.....	Carrie Fisher-Fernan
Administrative Assistant II (Learning).....	Debbie Rodgers
Administrative Assistant II (CBO).....	Susan Dorin
Administrative Assistant II (SS).....	Megan Adams
District Nurse.....	Joellen Semo
Accountant Confidential.....	Angelica Paredes
Human Resources Technician.....	Terri Freepartner
Accounts Payable.....	Jaimie Hecht
Payroll/Attendance.....	Sharon Jimenez
Purchasing/Transportation.....	Cathy Caballero
Information Systems Technician.....	Ramona Maggio
Administrative Assistant (HR).....	Kelley Englehart
Accounting Assistant II.....	Suzanne Mitrovich

Superintendent

Chief Executive Officer (CEO) – responsibility for the daily operation of the company

Chief Human Resources Officer – oversees all human resource management and labor union relations

Chief Learning Officer – responsible for student academic success and staff professional development

Chief Communications Officer – head of communications, public relations, social media and/or public affairs within the organization

Chief Innovation Officer – responsible for seeding the future, identifying and exploring options for the district to develop new opportunities

Chief Compliance Officer – responsible for compliance in accordance to applicable laws, policy, and regulations

Associate Superintendent

Chief Business Officer (CBO) – responsibility for the daily business operation of the company

Chief Financial Officer – responsible for the fiscal health of the district

Chief Technology Officer – primarily concerned with long-term and "big picture" issues

Chief Data Officer – the manager for enterprise-wide data processing and data mining

Chief Analytics Officer – overall responsibility for the analysis and interpretation of data

Chief Information Officer – overall responsibility for the company's information resources and processing environment

Senior Director of Learning: Chief Administrator for:

Curriculum, Instruction, Learning, and Strategic Planning including the Local Control and Accountability Plan (LCAP)

Assessment of Student Achievement including the CAASPP, CELDT, and other state and local assessments

Compliance with local, state, and federal instructional, curricular, and learning regulations

Senior Director of Human Resources Chief Administrator for:

All services related to classified, certificated, and management personnel

Collective bargaining communication and contract management

Procedures pertaining to employer/employee relations and services

Employee health and welfare benefits including Worker's Compensation

Compliance with local, state, and federal regulations for all personnel

Director of Student Services Chief Administrator for:

Student assessments, consultation services, and psychological services

Special education services including 504, SST, behavioral, and emotional support

Health and counseling services including supervision of the district & school nurse(s)

Compliance with local, state, and federal regulations regarding special education, health, and counseling